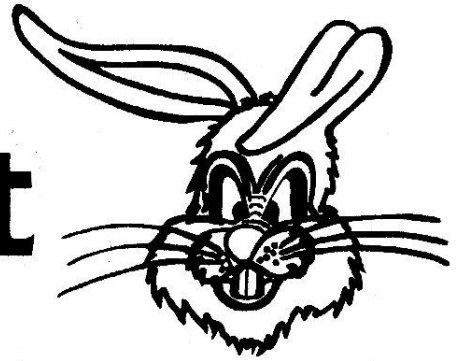


Somerset High School

Show Respect



Have Responsibility

Set an Example

DO NOT PUT YOUR NAME ON THIS SHEET

FOLD THE PAPER IN HALF AND TURN THIS IN TO THE OFFICE WHEN COMPLETED

SURVEY IS DUE BY 3:20 ON MONDAY 10.19.2009

Survey Questions to answer:

Rank each question, 1 being the lowest and 5 being the highest.

Only provide one response per question.

No two questions can share the same rank.

1. All teachers need to be more consistent with rules / expectations across all grade levels.
1 2 3 4 5
2. The 10 / 10 Rule (No Zone) needs to be in place with all teachers and staff.
1 2 3 4 5
3. Clarification of the Dress Code needs to be addressed with the Staff and Students.
1 2 3 4 5
4. The office referral process needs to be clearer with all teachers.
1 2 3 4 5
5. All teacher supervision for students needs to be consistent on a daily basis.
1 2 3 4 5



Somerset High School

301 College Street ♦ Somerset, Kentucky 42501 ♦ Telephone (606) 678-4721 ♦ Fax (606) 677-0087

January 4, 2010

Mark Murray
Principal

Clabe Slone
Assistant Principal

Amy Walters
Guidance Counselor

Doug Grider
Guidance Counselor

Dear _____,

We are pleased to learn that you have an interest in helping our students achieve positive learning behaviors. With your help, it is our desire to reward good behavior to many students in the upcoming year.

Starting in January 2010 our high school will implement a new program through KYCID, an organization that is recognized state wide. Part of the program is to identify excellent behavior with a rewards system that will encourage other students. The rewards need to be frequent and worthwhile.

Students that will be receiving rewards from your business will benefit from your small token of appreciation. You too will benefit by obtaining more exposure and consumers into your stores. This is a Win-Win situation for everyone involved.

Any donations of gift cards, vouchers, or coupons are welcomed. They do not have to be large in value; however, we do need a good quantity to pass out to students weekly. Our goal is to give out one reward per grade level (9th grade – 12th grade).

These rewards will be provided to students whose name is selected through a random drawing of names from tickets. These tickets will be given out each week from teachers that observe good, positive behaviors from students.

Again, thank you for your interest and time assisting us with this proactive approach. Please contact me if you have any questions or want to make a contribution.

Clabe Slone
Assistant Principal

The Somerset Independent Board of Education is an equal opportunity organization that does not discriminate on the basis of race, color, national origin, sex, age, religion, marital status or disability in course offerings or employment practices.



Mark Murray
Principal

Clabe Slone
Assistant Principal

Amy Walters
Guidance Counselor

Doug Grider
Guidance Counselor

Somerset High School

301 College Street ♦ Somerset, Kentucky 42501 ♦ Telephone (606) 678-4721 ♦ Fax (606) 677-0087

May 12, 2010

Dear _____,

The Jump Team at Somerset High School would like to thank you for your investment and contributions that you have made toward our Positive Behavior Rewards System.

Your rewards have been a part of our overall success in recognizing over 2,250 positive behaviors so far this year (2010). Students have been rewarded with gift cards and more of them are eager to have their names selected in the reward process.

We have placed a link on our website that displays your business name and describes what you have done in assisting us. Currently we are working on an article that will be submitted to our school newsletter and the Commonwealth Journal. We will be acknowledging your efforts along with the students in the community.

Thank you for your interest in helping our students measure positive behaviors outcomes. With your help, we are developing an encouraging climate that is spreading throughout the school. Please contact me if you have any questions or wish to make another contribution.

Respectfully,

Clabe Slone |
Assistant Principal

The Somerset Independent Board of Education is an equal opportunity organization that does not discriminate on the basis of race, color, national origin, sex, age, religion, marital status or disability in course offerings or employment practices.



Mark Murray
Principal

Clabe Slone
Assistant Principal

Amy Walters
Guidance Counselor

Doug Grider
Guidance Counselor

Somerset High School

301 College Street ♦ Somerset, Kentucky 42501 ♦ Telephone (606) 678-4721 ♦ Fax (606) 677-0087

January 6, 2011

Dear _____,

We are pleased to let you know that The JUMP team at Somerset High School will again be rewarding students for positive behaviors. The success of these rewards only occurs with your willingness to donate. At the end of school last year, we had given out 2,809 green tickets to students for recognizing our school wide student expectations. That resulted in 2,809 positive behaviors that were observed. With your help, we wish to reward more students for displaying good behavior this school year.

Starting in January 2010 our high school implemented a new program through KYCID, an organization that is recognized state wide. Part of the program is to identify excellent behavior with a rewards system that will encourage other students. The rewards need to be frequent and worthwhile.

Students that will be receiving rewards from your business will benefit from your small token of appreciation. You too will benefit by obtaining more exposure and consumers into your stores. This is a Win-Win situation for everyone involved.

Any donations of gift cards, vouchers, or coupons are welcomed. They do not have to be large in value; however, we do need a good quantity to pass out to students weekly. Our goal is to give out one reward per grade level (9th grade – 12th grade).

These rewards will be provided to students whose name is selected through a random drawing of names from tickets. These tickets will be given out each week from teachers that observe good, positive behaviors from students.

Again, thank you for your interest and time assisting us with this proactive approach. Please contact me if you have any questions or want to make a contribution.

Clabe Slone
Assistant Principal

The Somerset Independent Board of Education is an equal opportunity organization that does not discriminate on the basis of race, color, national origin, sex, age, religion, marital status or disability in course offerings or employment practices.

Under the leadership of assistant principal Clabe Slone, Somerset High School has formed a partnership with the Kentucky Center for Instructional Discipline (KYCID) to increase consistency among teachers for student behavior expectations. This year the SHS Jump Team has worked to establish common language regarding behavior with all staff members. The team, with the assistance of all SHS staff and students, developed the following school motto for Somerset High School:

Show Respect
Have Responsibility
Set an Example

In addition, Mr. Slone has implemented a behavior rewards system that recognizes students for exemplary behavior during the school day. Teachers nominate students by writing their names on tickets that are submitted to the office weekly. At the end of the week, tickets are drawn for prizes such as gift cards from Dairy Queen, Baxter's Coffee, Penn Station Subs, Mr. Gatti's Pizza, Somerset Cinemas 8, Cracker Barrel, Pizza Hut, and McDonald's. We greatly appreciate these businesses for helping us to recognize outstanding students. In addition, we appreciate our teachers because our data shows that over 80% of them are submitting tickets weekly and rewarding many good behaviors.



Pictured are the Somerset High School KYCID Jump Team members: Nathan Nevels, Heather Baker, Donna Perdue, Forrest Spillman, Asst. Principal Clabe Slone, Sharon Calahan, Amy Walters, and Tim Ham.

Positive Behavior Interventions and Support / KYCID Program

Somerset High School: Year 1 PBIS Review (2009 – 2010)

- Established JUMP Team (KYCID Team)
- Office Referral Process – Flow Chart for major & minor infractions
- Positive Rewards System – Ticket Program
- Data Collection on Rewards System
- Start of SWIS (Discipline Data to guide decisions and solutions)
- Community Support for Positive Rewards
- Plan to gather support for Rewards
- Monthly Meetings with KYCID Team – JUMP Team
- School Wide Student Expectations in all common areas and classrooms
- Teachers reinforce strategies – Daily announcements of Expectations
- Update and Review Code of Conduct (Student Handbook)
- Student Handbook communicated to all students / parents (placed on website)
- SHS met all standards for a Tier 1 KYCID School during its first year

Somerset High School: Year 2 PBIS Review (2010 – 2011)

- Behavior Matrix – created by our teachers
- Staff T Shirts with SHS School Wide Student Expectations
- Continuation with community support (teacher lead)
- Monthly Staff meetings with KYCID focus agenda only
- Revised the school office referral process – major & minor infractions
- School Store
- 2nd Rewards System
- Student KYCID Team
- Solution Focused Team
- Self Report of Behavior – minor referrals
- Parent / Teacher / Community Information (Public Relations)
- Behavior Education Plan
- Check In / Check Out Program
- Anti Bullying Procedures
- Suicide Crisis Plan Developed
- RTI Behavior Screener (Student Risk Screening Scale) SRSS
- Continuation with SWIS (Discipline Data to guide decisions)
- SHS met or exceeded all standards for a Tier 2 KYCID School during its second year
- SHS is in the process of evaluating their KYCID program through Benchmarks of Quality, Team Implemented Checklist, and SAS staff surveys that will take place in April

JUMP TEAM & SOLUTION FOCUSED TEAM AGENDA

12.14.2010

NO EXCUSES! POSITIVE SOLUTIONS ONLY!!! ☺

1. Sign In Sheets
2. Rewards turned in thus far – Perdue, Calhan, Vaughn, Slone
3. Suicide Prevention Plan & Crisis Plan (Review Draft)
4. Jason Gibson (RTI Behavior Meeting)
5. Behavior Education Program (Step by Step Process)
 - a. Check In / Check Out – RTI Behavior
 - b. Self Report of Behavior / Minor Referrals for Teachers
6. Office Referral Process
 - a. Minor and Major Infractions
 - b. Addition – Self Report of Behavior
7. **Assigned Faculty Meetings & Dates**
 - a. **Solution Focused Team January 10, 2011**
 - i. Darry Burkett – Systems (Behavior Education Program)
 - ii. Debbie Harris – Green Ticket Coordinator
 - iii. Kathy King – Parent / PR Contact
 - iv. Susan McCloy – Solutions (Behavior Education Program)
 - v. Jana Odom – RTI Behavior Assistant
 - vi. Jared Swearingen – RTI Behavior Coordinator
 - b. **Updated Crisis Procedures & Staff Training on PBS Components February 22, 2011**
 - i. Amy Walters
 - ii. Nathan Nevels
 - c. **Activities for non-classroom areas & Faculty Feedback / Data March 28, 2011**
 - i. Alexis Vaughn
 - ii. Forrest Spillman (Surveys)
 - d. **School Wide Rewards System & Classroom Expectations April 25, 2011**
 - i. Tim Ham
 - ii. Sharon Calahan
 - e. **School Safety / PBS Evaluation May 17, 2011**
 - i. Clabe Slone
8. Next Meeting (BOTH TEAMS COMBINED) **January 19, 2010**
9. Open Items to Discuss?

SELF-REPORT OF BEHAVIOR
SOMERSET HIGH SCHOOL
301 COLLEGE STREET
SOMERSET, KY 42501
606-678-4721

Name of Student: _____
Grade: _____ Date of Infraction: _____
Location of Infraction: _____
Parent of Student: _____
Parent Phone Number: _____
Second Number: _____
E-Mail: _____
Method of Parent Contact: _____

TEACHER: _____

STUDENT DISCIPLINE RECORD	<input type="checkbox"/> First Offense <small>(Recommended Parent Contact)</small>	<input type="checkbox"/> Second Offense <small>(Required Parent Contact)</small>	<input type="checkbox"/> Third Offense <small>(Office Referral/IC)</small>
<input type="checkbox"/> Failure to Observe School Rules	<input type="checkbox"/> Harassing classmate	<input type="checkbox"/> Class disruption	
<input type="checkbox"/> Destructive to School Property	<input type="checkbox"/> Language	<input type="checkbox"/> Excessive talking/Loudness	
<input type="checkbox"/> Disrespectful to Authority	<input type="checkbox"/> Rude/Disrespectful	<input type="checkbox"/> In inappropriate area	
<input type="checkbox"/> Non-Compliance (Passive)	Other: _____		

In your own words, describe what happened in detail. (Tell the whole story.)

(Rules) Which rule or rules were broken? _____

(Consequences) What do I think should happen? _____

What can I do to assure this NEVER happens again? _____

Student: _____

Date: _____

Teacher: _____

Date: _____

Teacher's Decision _____

Staff JUMP Team at SHS



Student JUMP Team at SHS



Student JUMP Team Members

Holly Bullock	Junior
Tyler Brummett	Senior
Chelsie Fitzpatrick	Senior
Joey Harris	Senior
Carlton Jackson	Sophomore
Adam Lowe	Junior
Sunshine Randolph	Senior
Patrick Williams	Sophomore

JUMP Team Members

Donald Calhan	Parent
Sharon Calhan	Math Teacher
Tim Ham	Social Studies Teacher KYCID Coach
Nathan Nevels	Wright Steps Director KYCID Coach
Donna Perdue	Youth Service Center
Clabe Slone	Assistant Principal KYCID Team Leader
Forrest Spillman	Math Teacher
Alexis Vaughn	Reading Teacher
Amy Walters	Guidance Counselor
Wanda White	Resource Teacher

Solution Focused Team

Darry Burkett	Business Teacher
Tim Ham	KYCID Coach
Debbie Harris	Vocational Teacher
Kathy King	Resource Teacher
Susan McCloy	French / German Teacher
Nathan Nevels	KYCID Coach
Jana Odom	English Teacher
Clabe Slone	KYCID Team Leader
Jared Swearingen	Social Studies Teacher

Updated 12.12.2010

***JUMP Team:
A PROACTIVE
APPROACH TO
INSTRUCTIONAL
DISCIPLINE***

**Show Respect
Have Responsibility
Set an Example**



Somerset High School
301 College Street
Somerset, KY 42501
Phone: 606.678.4721
Fax: 606.677.0087

JUMP TEAM

Somerset High School



**Somerset Independent
Schools**

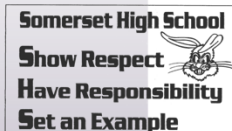
606.678.4721

JUMP IN!!

For the past two years SHS has been involved with the KYCID program to improve and promote positive behaviors. We have two teams that work with our students, teachers, and parents. The JUMP Team and Solution Focused Team have been working closely with KYCID to help build a positive school culture.

The JUMP Team has already established school wide student expectations, a positive rewards systems, and resources for teachers to assist in developing procedures for all students.

SHS Expectations



These expectations are exposed throughout the building to promote student success.

Positive Rewards Systems

With the help of parents and the community, the JUMP Team started project "Green Ticket." The idea is to reward students that have provided teachers an example of the school wide student expectations. Students from each grade level are rewarded with gift cards to various businesses in town. These gift cards have been donated to the school with the help of the JUMP Team.



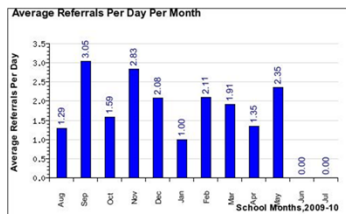
Jumper Tickets are also rewarded to students from the staff. These are tickets that can be used at the school store to purchase items that a student may want or need.

Teacher Resources

Our JUMP team guides the staff when addressing discipline issues. The school wide expectations are taught by staff to all students at the beginning of each school year and they are reviewed when coming back from breaks.

Through the use of surveys a Office Referral Process was customized to fit the needs of the school. This flow chart provides teachers with a step by step process to resolve conflicts.

The on-line SWIS program provides data to illustrate our biggest 5 concerns with discipline. They are location, time, behavior, number of referrals per day per month, and referrals by student.



In relation to school safety, the JUMP team also updates all crisis plans, emergency procedure plans, and suicide prevention plans. Feedback is given back to the staff on any adjustments and recommendations.

With the assistance of all teachers, the JUMP Team created a Behavior Matrix to assist with expectations in all common areas for students to follow.

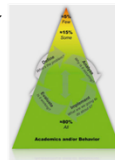
Hallways Jumpers Believe in School Pride!		
Show Respect Use appropriate language Keep your hands to your self Cough/sneeze for others to walk	Have Responsibility Be Aware of the 10 / 10 Rule Make use of all trash cans Report spills immediately to the nearest adult	Set An Example Look out for other students Walk in the Hallways Pick up trash when you see it in the floor

Student JUMP Team

A student JUMP Team also exist here at SHS. This team consist of students from 3 different grade levels. They meet once a month to discuss the school culture, in which they provide positive feedback to the teachers, input for school improvement, and input on positive behavior rewards. They have also helped with the development of our school store.

Solution Focused Team

A secondary part of the JUMP Team is our Solution Focused Team. They are in charge of our Behavior Education Programs, which includes our RTI Behavior component. They are responsible for creating solutions for behavior with a proactive approach. Solutions that they have implemented include our Check In / Check Out program and a Self Report of Behavior, referrals for minor infractions.



JUMP TEAM . SHS . KYCID

Somerset High School
301 College Street
Somerset High School 40251
Phone: 606.678.4721
Fax: 606.677.0087

KYCID Program: Programs, Activities, & Resources implemented

JUMP Team: Amy Walters, Alexis Vaughn, Donna Perdue, Nathan Nevels, Tim Ham, Sharon Calahan, Donald Calahan, Wanda White, Forrest Spillman, & Clabe Slone

- Monthly Meetings
- KYCID Trainings Universal, Secondary, and Coaching Levels
- School Wide Student Expectations
- Positive Rewards System
 - Green Tickets
 - Jumper Tickets
- Local Business Involvement
- School Culture Surveys
- School Shirts for all Staff reinforcing the School Wide Student Expectations
- Office Referral Process
- SWIS Program (Discipline Data)
- Infinite Campus Office Referral On-Line
- Behavior Matrix for all non-classroom areas (Teacher Developed – All Staff)
- Behavior Matrix Posters positioned throughout the building
- Monthly Staff Meetings reserved for JUMP Team and KYCID information
- Staff Training on PBS Components
- Classroom Expectations
- Crisis Planning
- Student operated school store created

Student JUMP Team: Holly Bullock, Tyler Brummett, Chelsie Fitzpatrick, Joey Harris, Carlton Jackson, Adam Lowe, Sunshine Randolph, & Patrick Williams

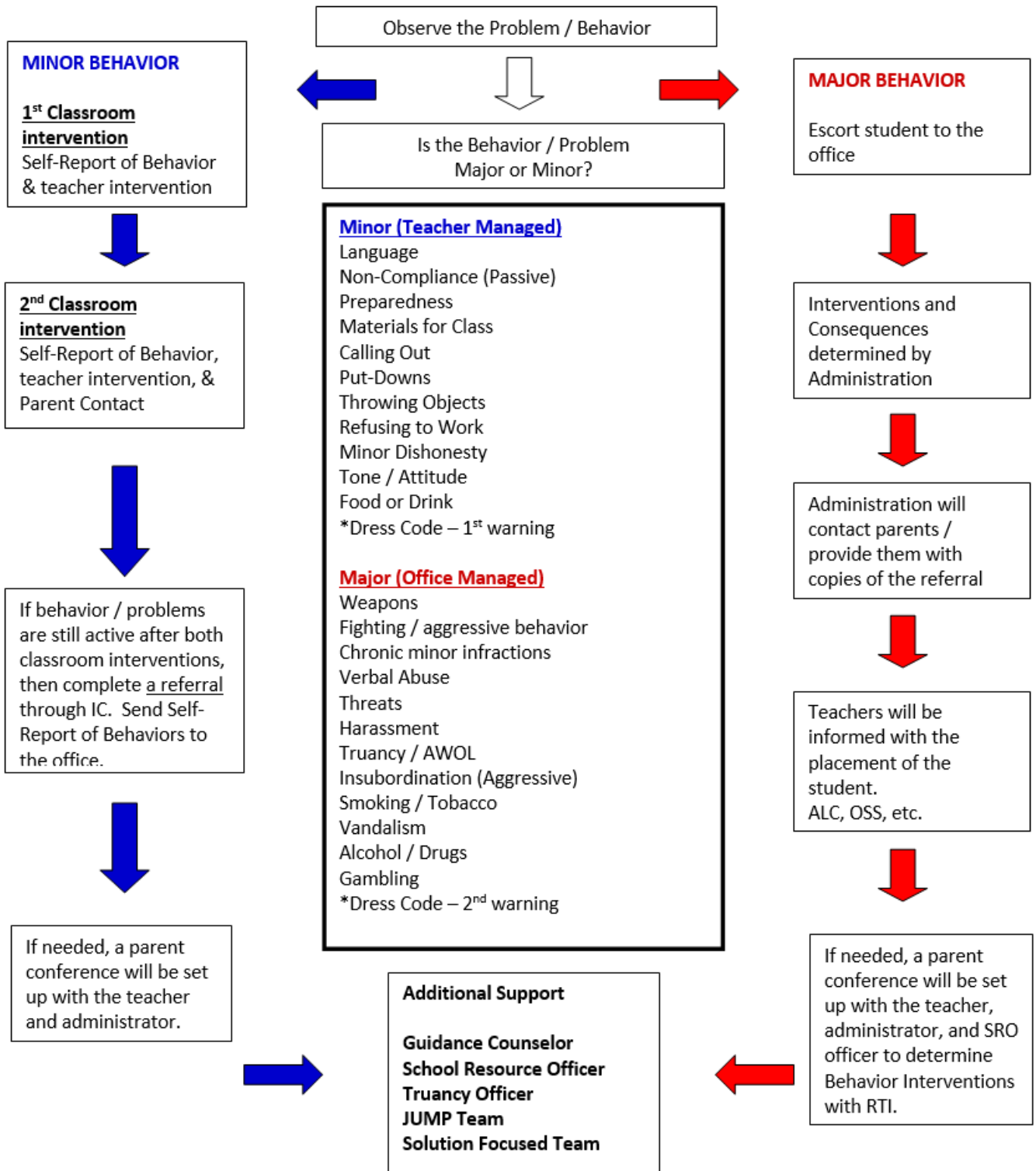
- Monthly Meetings
- Discuss School Culture
- Student Surveys
- Provide Positive Feedback for the teachers
- Input for school improvement
- Input on Positive Behavior Rewards
- Provide direction on the student school store

Solution Focused Team: Darry Burkett, Susan McCloy, Debbie Harris, Kathy King, Jared Swearingen, & Jana Odom

- Monthly Meetings
- Systems and Solutions
- Behavior Education Program
- Check In / Check Out Program
- Self Report of Behavior
- Parent & Public Relations
- RTI Behavior
- Student Risk Screening Scale (Universal Screener for RTI Behavior)

Somerset High School 2010 – 2011

Updated: 01.25.2011



April 21, 2010

Congratulations!

Clabe Slone

Somerset High School

***A High School's First Year with
PBIS***



We are excited to let you know that your proposal for the KY-PBIS Network Conference has been accepted for June 29th at the Perkins Center on campus of ECU in Richmond.

Final decisions as to which time slot are still being determined. Please let us know if you must have either morning or afternoon, otherwise we will let you know in May.

Please review the important reminders:

IMPORTANT REMINDERS:

- ✓ Each presenter is responsible for providing any laptop and/or projector as well as chart stand if desired for the presentation. KYCID will provide a table and chart paper.
- ✓ Each presenter is responsible for providing participant handouts or electronic access to presentation materials.
- ✓ Each session is 60 minutes in length.

Please contact Mike Waford if you have any questions or issues.
Office- 866-278-3186, Cell-502-330-3866.

RTI Behavior Checklist / Check In – Check Out Program

Student's Name:	Grade 09 10 11 12 <small>Circle One</small>	Date:
RTI Teacher:	# of Days Assigned:	

Teachers: Please circle one point value per category. Only complete this at the end of each period. Please write in your initials for the student. Points that can be established: 1 Failing, 2 Average, 3 Good, and 4 Excellent.

Date:		RTI Teacher Initial:		
Period	Behavior	Participation in Class	Classroom Materials	Teacher Initial
1st	1 2 3 4	1 2 3 4	1 2 3 4	
2nd	1 2 3 4	1 2 3 4	1 2 3 4	
3rd	1 2 3 4	1 2 3 4	1 2 3 4	
4th	1 2 3 4	1 2 3 4	1 2 3 4	
5th	1 2 3 4	1 2 3 4	1 2 3 4	
6th	1 2 3 4	1 2 3 4	1 2 3 4	
7th	1 2 3 4	1 2 3 4	1 2 3 4	
Total Points				

Date:		RTI Teacher Initial:		
Period	Behavior	Participation in Class	Classroom Materials	Teacher Initial
1st	1 2 3 4	1 2 3 4	1 2 3 4	
2nd	1 2 3 4	1 2 3 4	1 2 3 4	
3rd	1 2 3 4	1 2 3 4	1 2 3 4	
4th	1 2 3 4	1 2 3 4	1 2 3 4	
5th	1 2 3 4	1 2 3 4	1 2 3 4	
6th	1 2 3 4	1 2 3 4	1 2 3 4	
7th	1 2 3 4	1 2 3 4	1 2 3 4	
Total Points				

Date:		RTI Teacher Initial:		
Period	Behavior	Participation in Class	Classroom Materials	Teacher Initial
1st	1 2 3 4	1 2 3 4	1 2 3 4	
2nd	1 2 3 4	1 2 3 4	1 2 3 4	
3rd	1 2 3 4	1 2 3 4	1 2 3 4	
4th	1 2 3 4	1 2 3 4	1 2 3 4	
5th	1 2 3 4	1 2 3 4	1 2 3 4	
6th	1 2 3 4	1 2 3 4	1 2 3 4	
7th	1 2 3 4	1 2 3 4	1 2 3 4	
Total Points				

Date:		RTI Teacher Initial:		
Period	Behavior	Participation in Class	Classroom Materials	Teacher Initial
1st	1 2 3 4	1 2 3 4	1 2 3 4	
2nd	1 2 3 4	1 2 3 4	1 2 3 4	
3rd	1 2 3 4	1 2 3 4	1 2 3 4	
4th	1 2 3 4	1 2 3 4	1 2 3 4	
5th	1 2 3 4	1 2 3 4	1 2 3 4	
6th	1 2 3 4	1 2 3 4	1 2 3 4	
7th	1 2 3 4	1 2 3 4	1 2 3 4	
Total Points				

Date:		RTI Teacher Initial:		
Period	Behavior	Participation in Class	Classroom Materials	Teacher Initial
1st	1 2 3 4	1 2 3 4	1 2 3 4	
2nd	1 2 3 4	1 2 3 4	1 2 3 4	
3rd	1 2 3 4	1 2 3 4	1 2 3 4	
4th	1 2 3 4	1 2 3 4	1 2 3 4	
5th	1 2 3 4	1 2 3 4	1 2 3 4	
6th	1 2 3 4	1 2 3 4	1 2 3 4	
7th	1 2 3 4	1 2 3 4	1 2 3 4	
Total Points				